



**HERONHILLS**  
IN PORT PERRY

**LOUISVILLE**  
30 FT. DESIGN

**ELEVATION A**  
1,886 SQ.FT.







**HERONHILLS**  
IN PORT PERRY

**LOUISVILLE**

30 FT. DESIGN

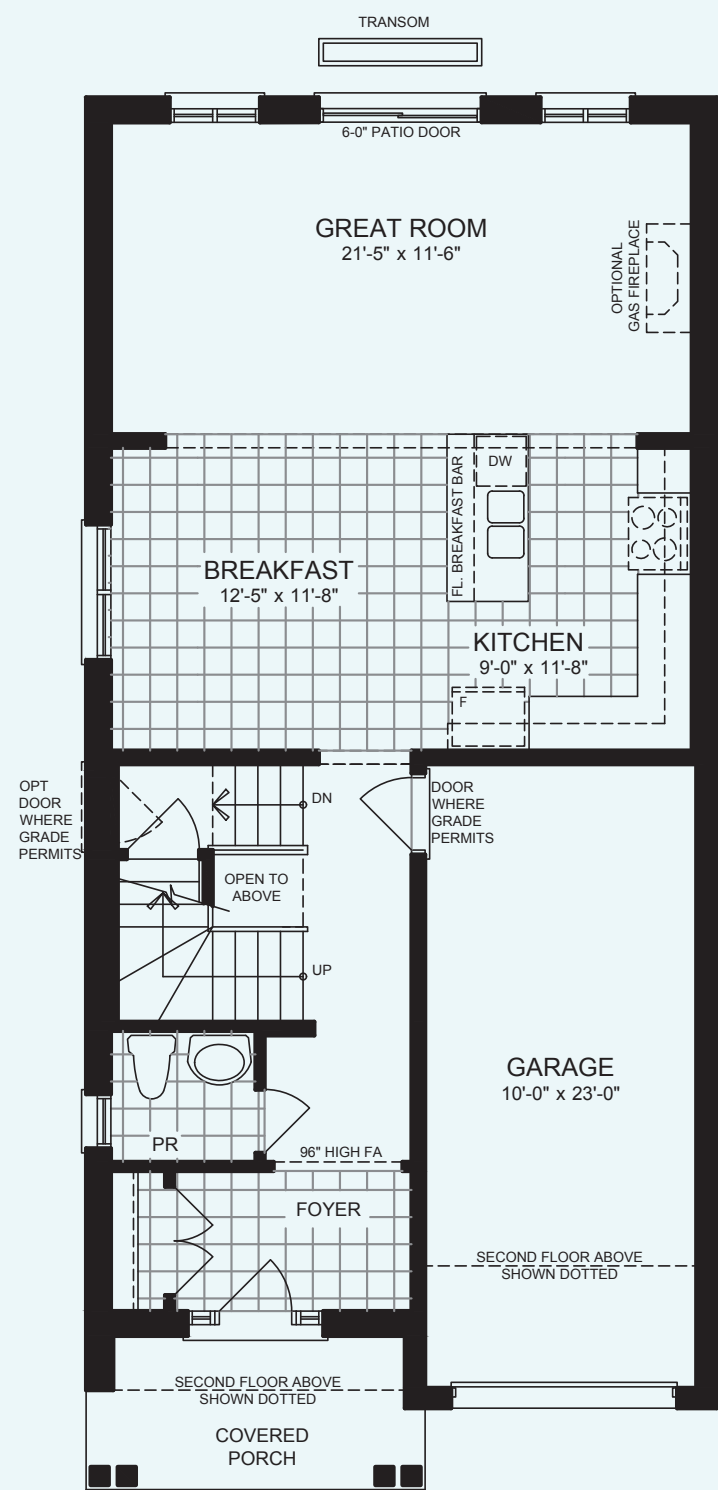
**ELEVATION B**

1,886 SQ.FT.

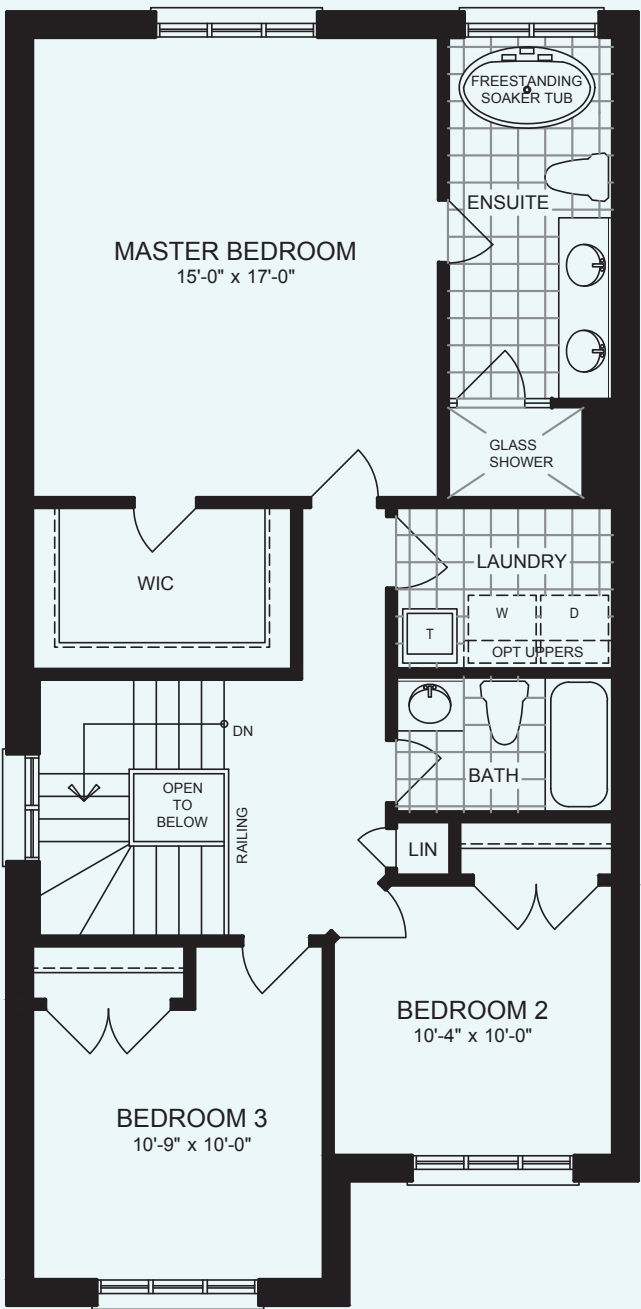


# LOUISVILLE 30 FT. DESIGN

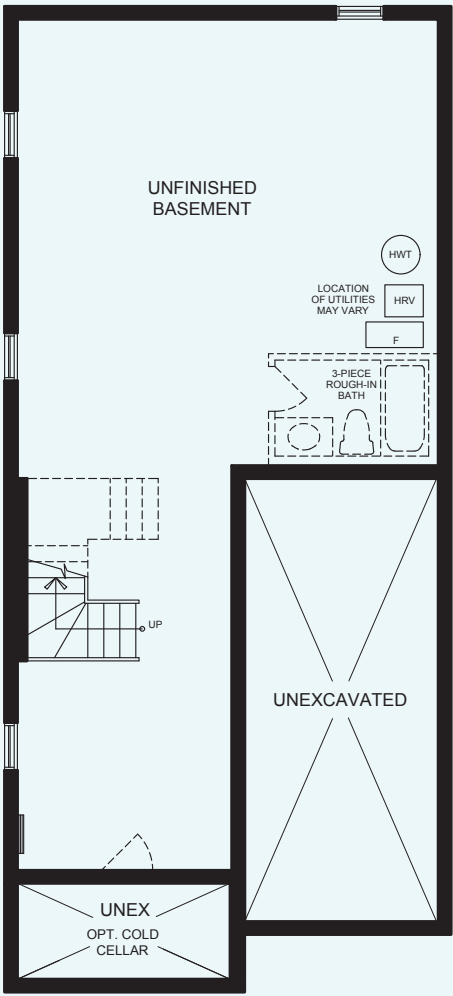
ELEVATION A 1,886 SQ.FT. ELEVATION B 1,886 SQ.FT.



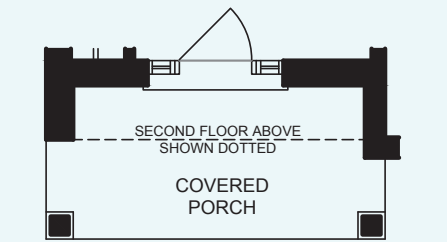
GROUND FLOOR PLAN  
ELEVATION A & B



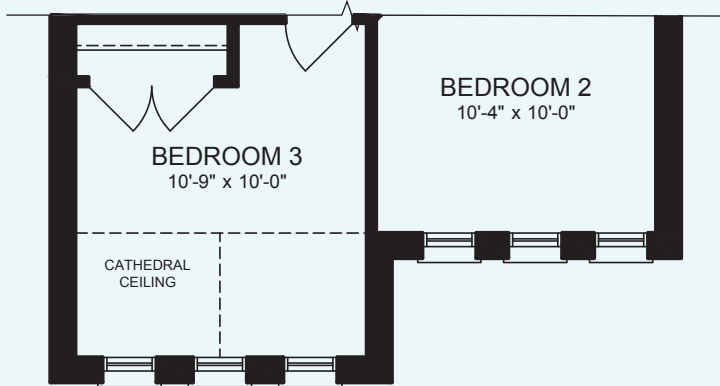
SECOND FLOOR PLAN  
ELEVATION A



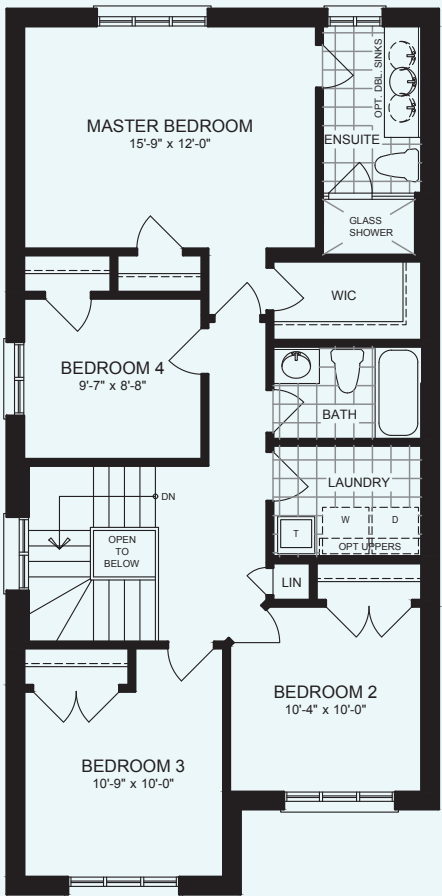
BASEMENT PLAN  
ELEVATION A & B



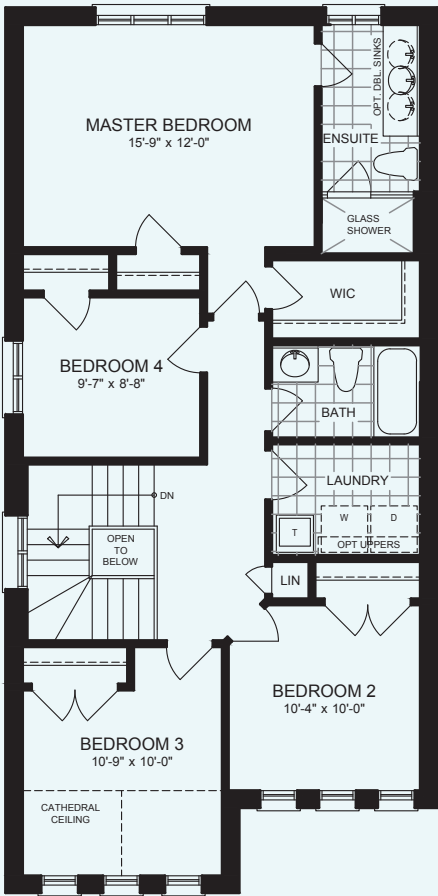
PARTIAL GROUND FLOOR PLAN  
ELEVATION A & B



PARTIAL SECOND FLOOR PLAN  
ELEVATION B



OPTIONAL SECOND FLOOR  
4 BEDROOM PLAN  
ELEVATION A



OPTIONAL SECOND FLOOR  
4 BEDROOM PLAN  
ELEVATION B

Plans, dimensions, materials and specifications are approximate and are subject to change without notice. Actual usable floor space may vary from the stated floor area. Illustrations and exterior home designs are artist's concept. E. & O.E.