

THE
ROSS
MODERN
TOWNS

6

KINGSBRIDGE
1,872 SQ.FT.

- 3 Bedrooms
- 2 Full Bathrooms
- 2 Powder Rooms
- 1 Laundry Room

delparkhomes.ca



KINGSBRIDGE 8
CORNER UNIT

KINGSBRIDGE 7

KINGSBRIDGE 5

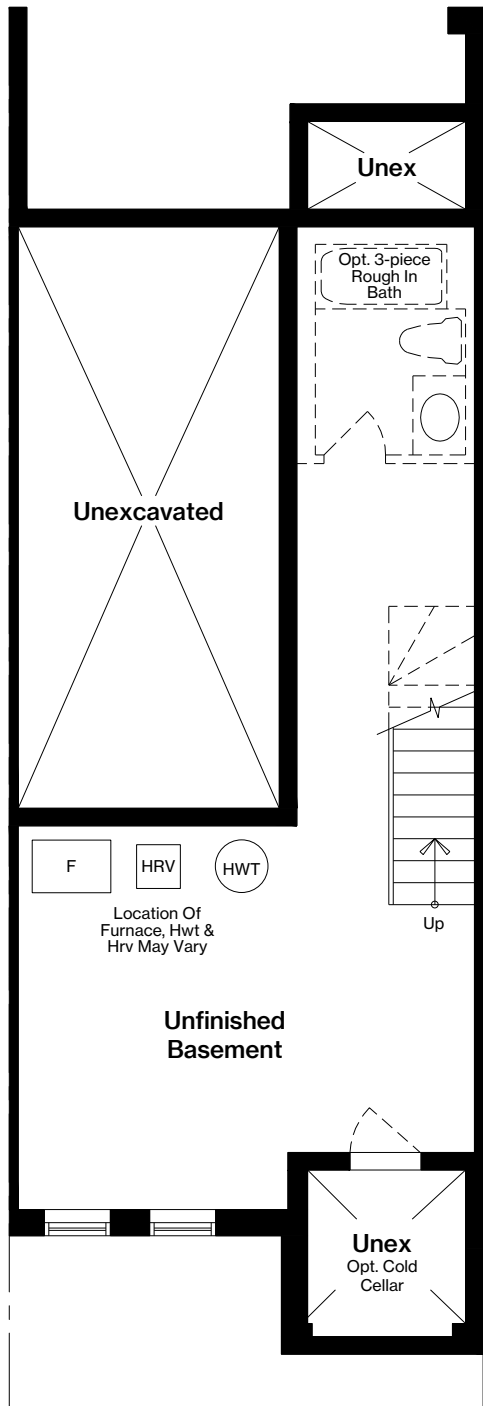
KINGSBRIDGE 7

KINGSBRIDGE 6

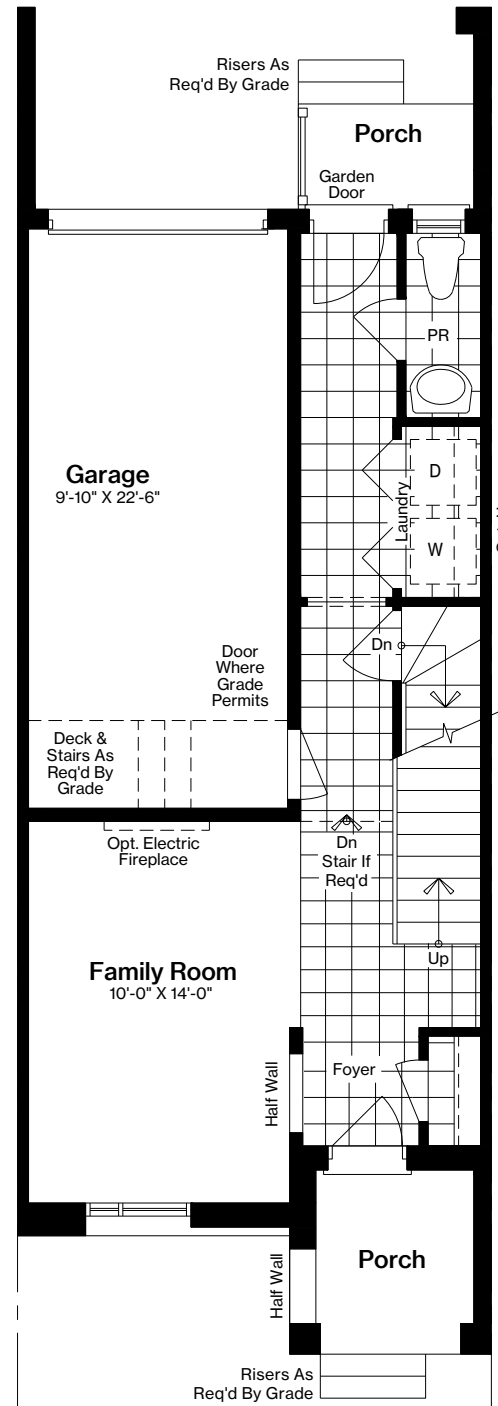
KINGSBRIDGE 7

KINGSBRIDGE 9
CORNER UNIT

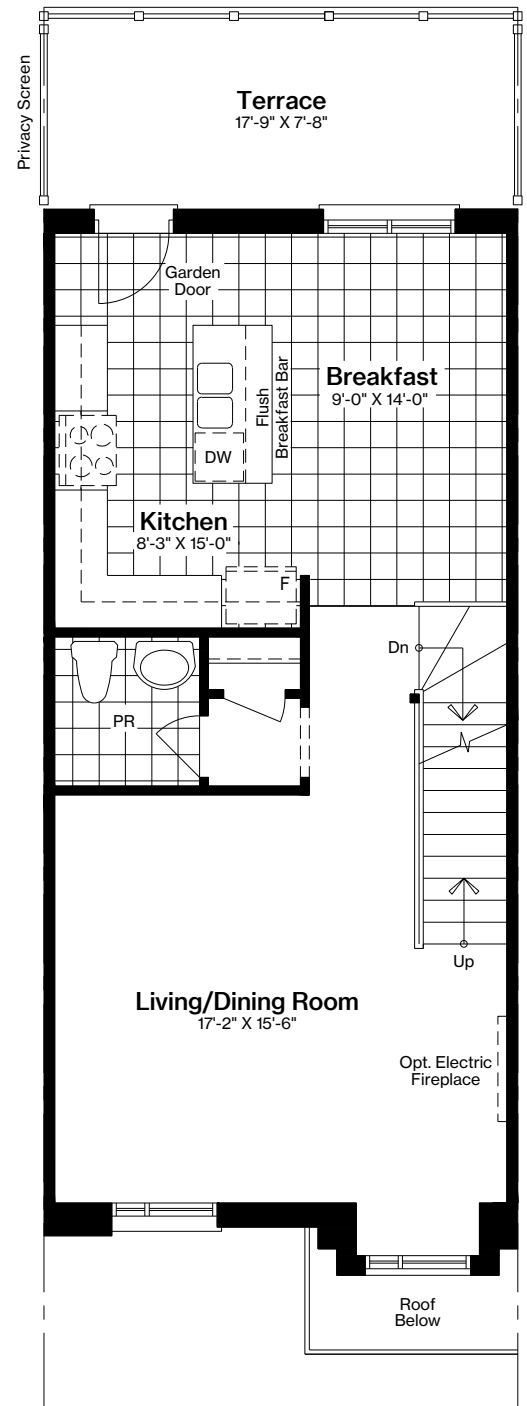
ELEVATION A-11= 1,872 sq.ft. | B-5= 1,880 sq.ft.



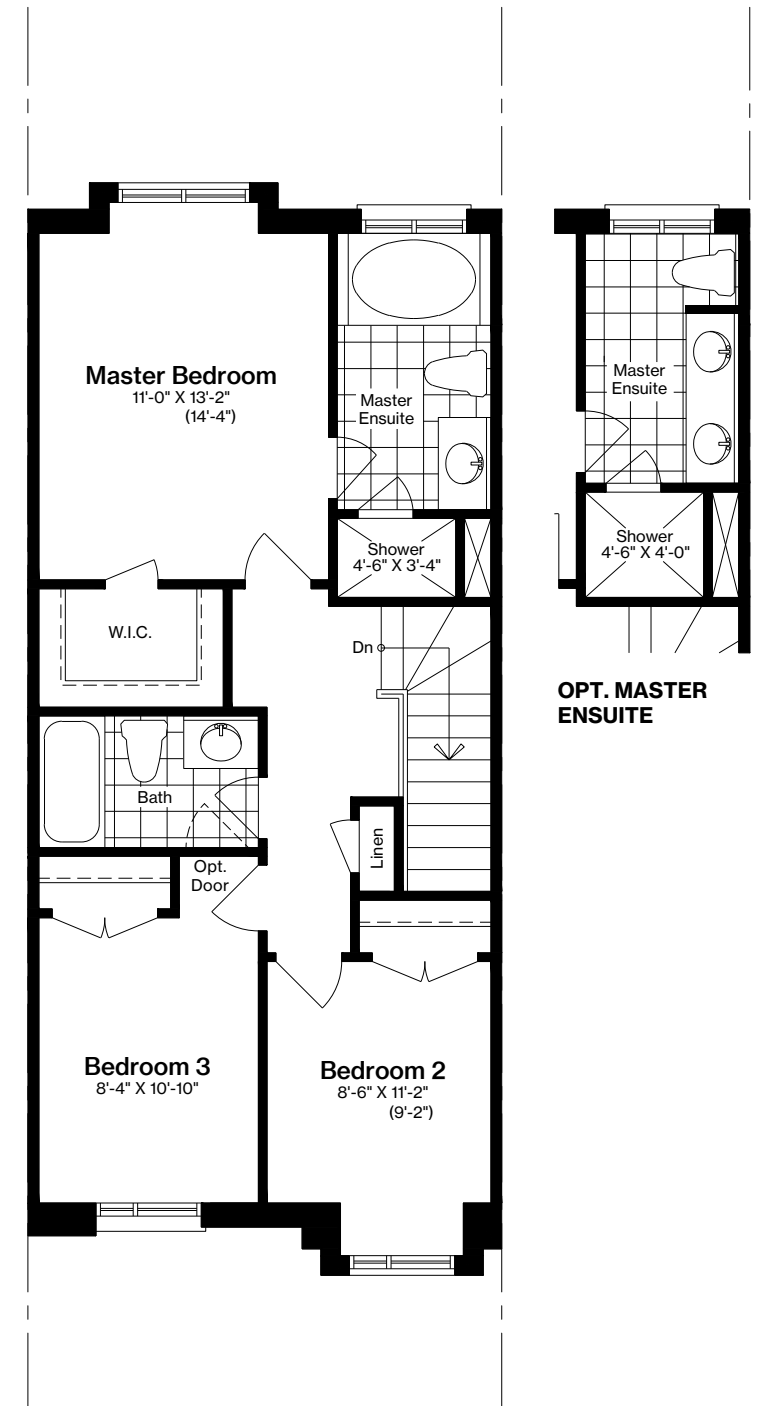
BASEMENT PLAN



FIRST FLOOR PLAN

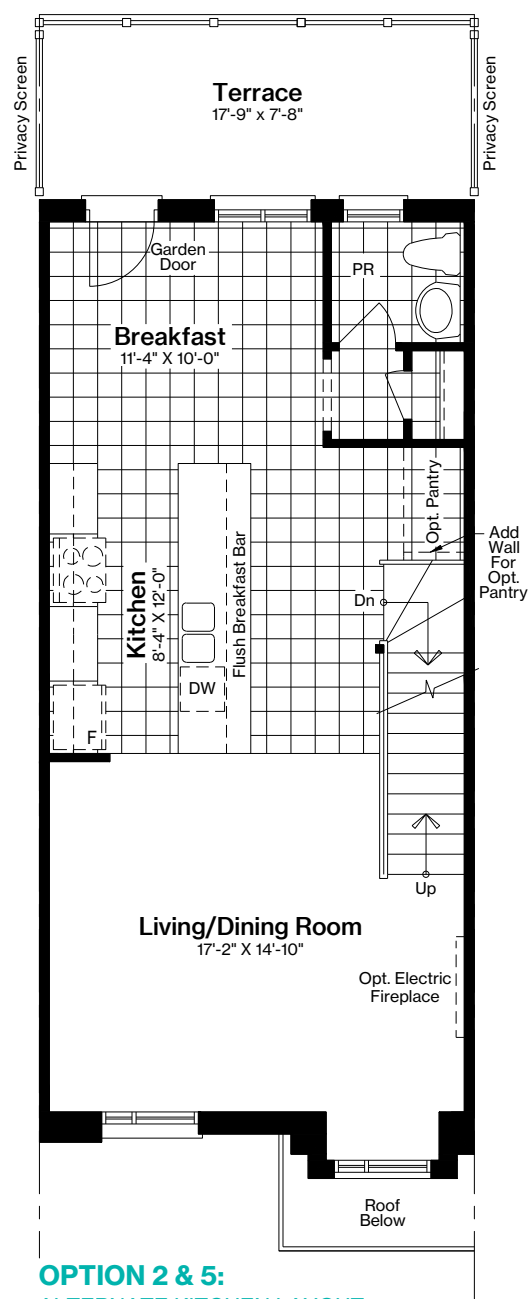


SECOND FLOOR PLAN

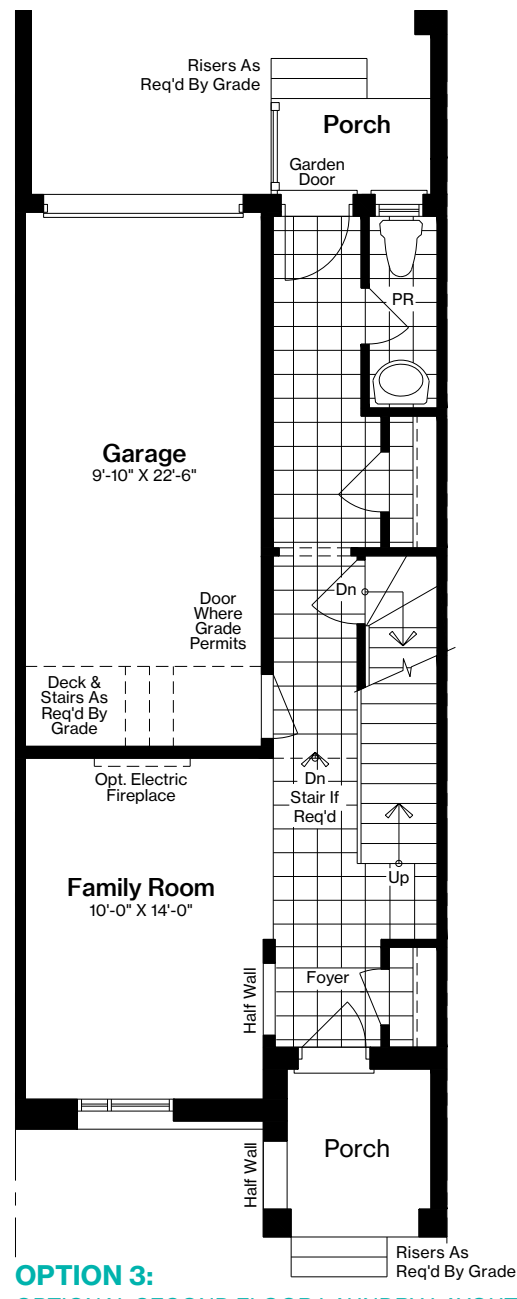


THIRD FLOOR PLAN

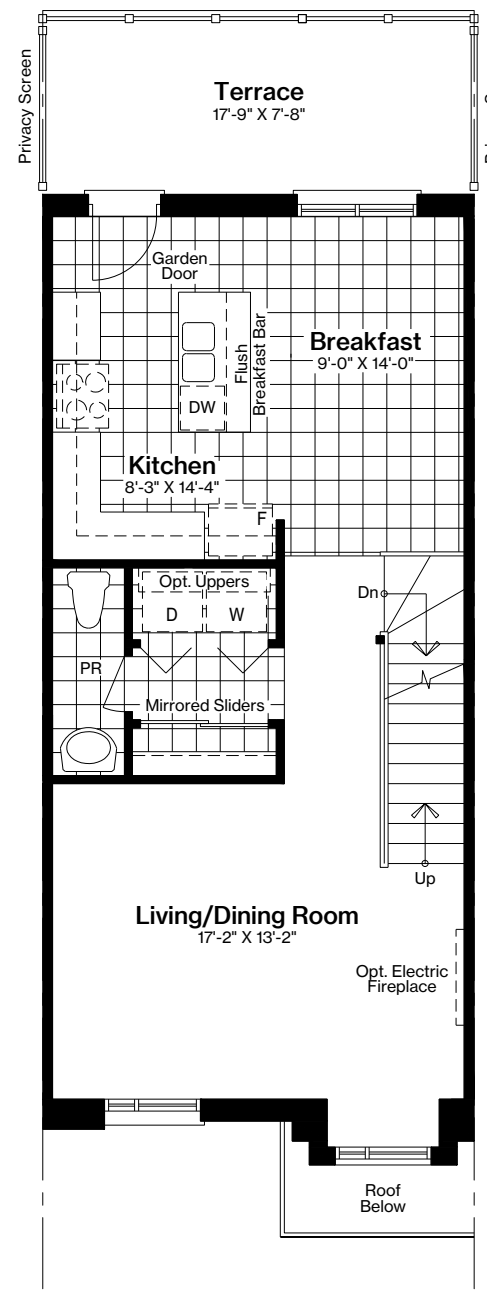
Alternate Layout Options



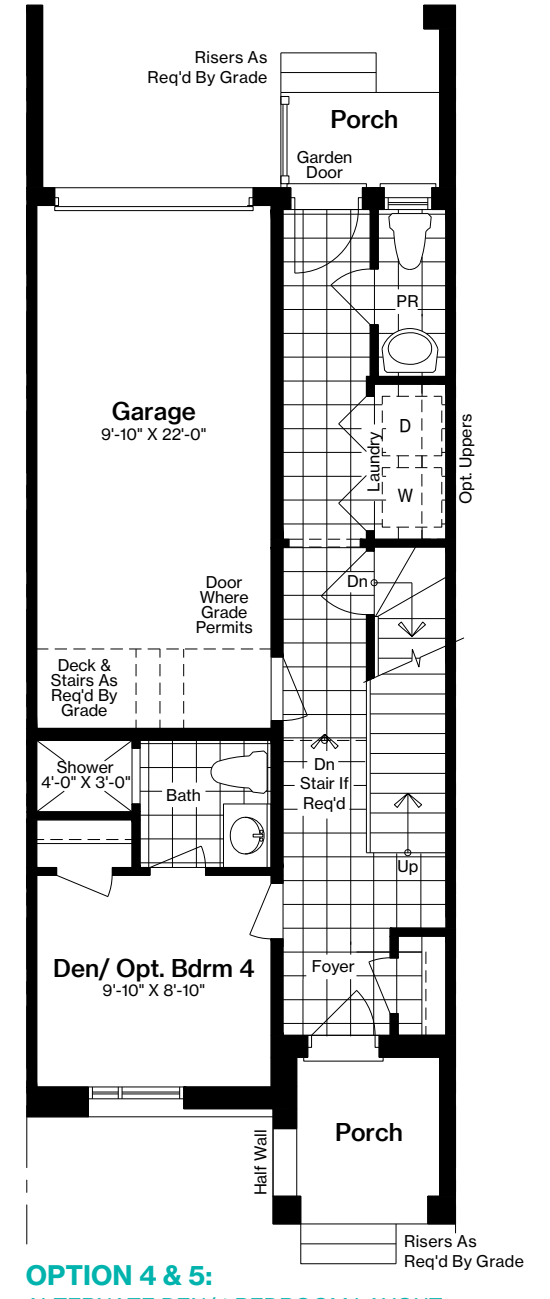
**OPTION 2 & 5:
ALTERNATE KITCHEN LAYOUT
SECOND FLOOR PLAN**



**OPTION 3:
OPTIONAL SECOND FLOOR LAUNDRY LAYOUT
FIRST FLOOR PLAN**



SECOND FLOOR PLAN



**OPTION 4 & 5:
ALTERNATE DEN/4 BEDROOM LAYOUT
FIRST FLOOR PLAN**