

THE
ROSS
MODERN
TOWNS

4A

DONCASTER CORNER

1,965 SQ.FT.

3 Bedrooms
2 Full Bathrooms
2 Powder Rooms
1 Laundry Room

delparkhomes.ca



DONCASTER 4A
END UNIT

DONCASTER 1

DONCASTER 3

DONCASTER 2

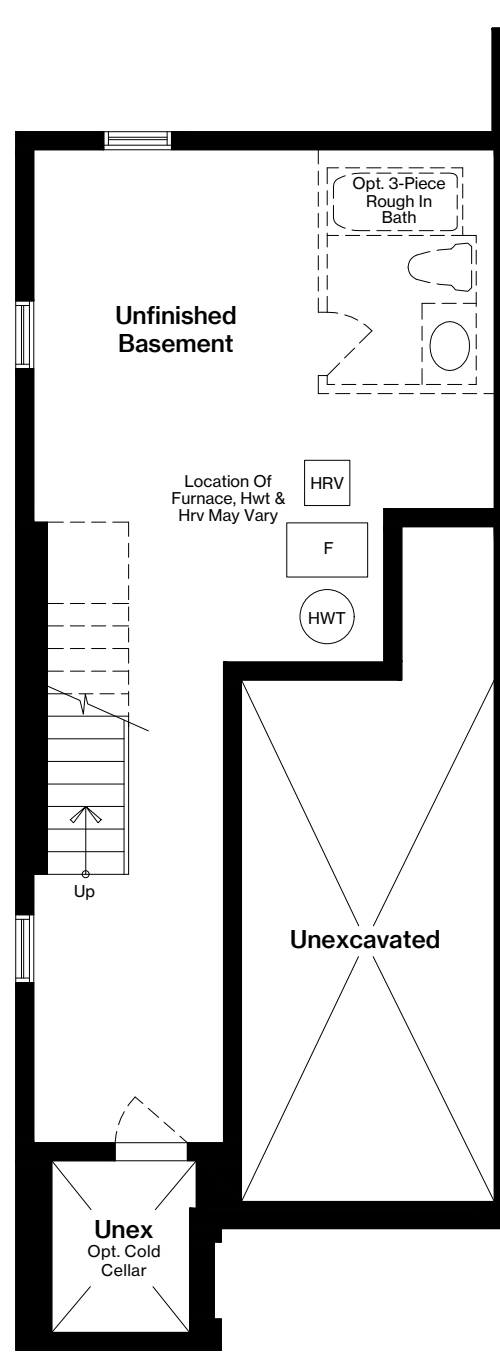
DONCASTER 3

DONCASTER 4A
CORNER UNIT

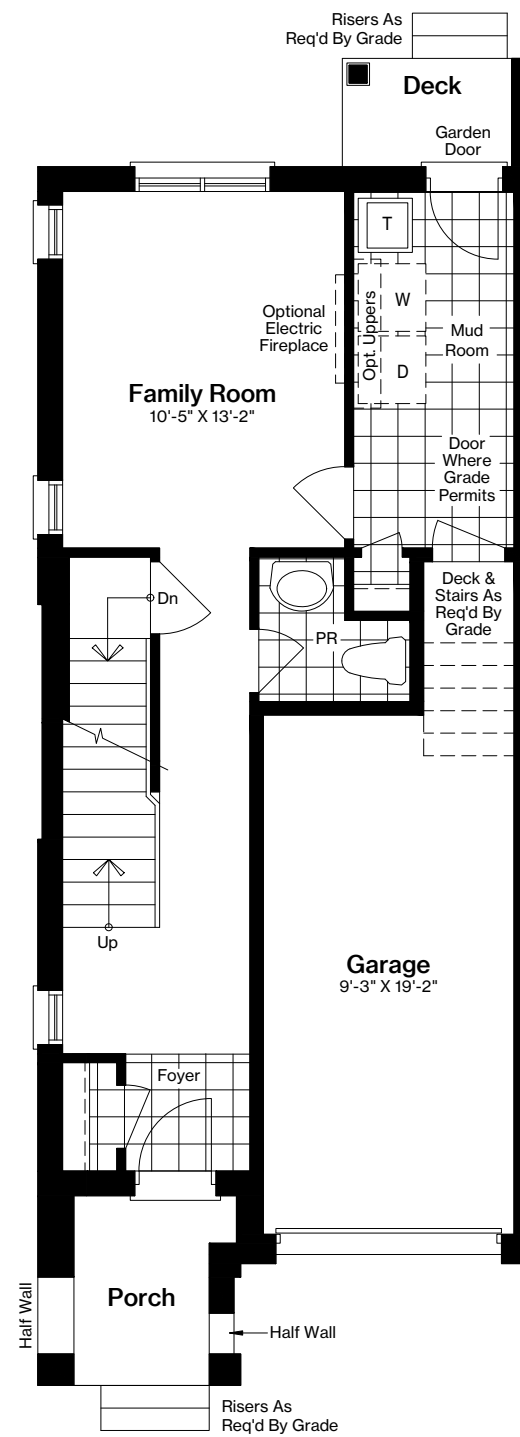
DONCASTER 4A CORNER

T4A

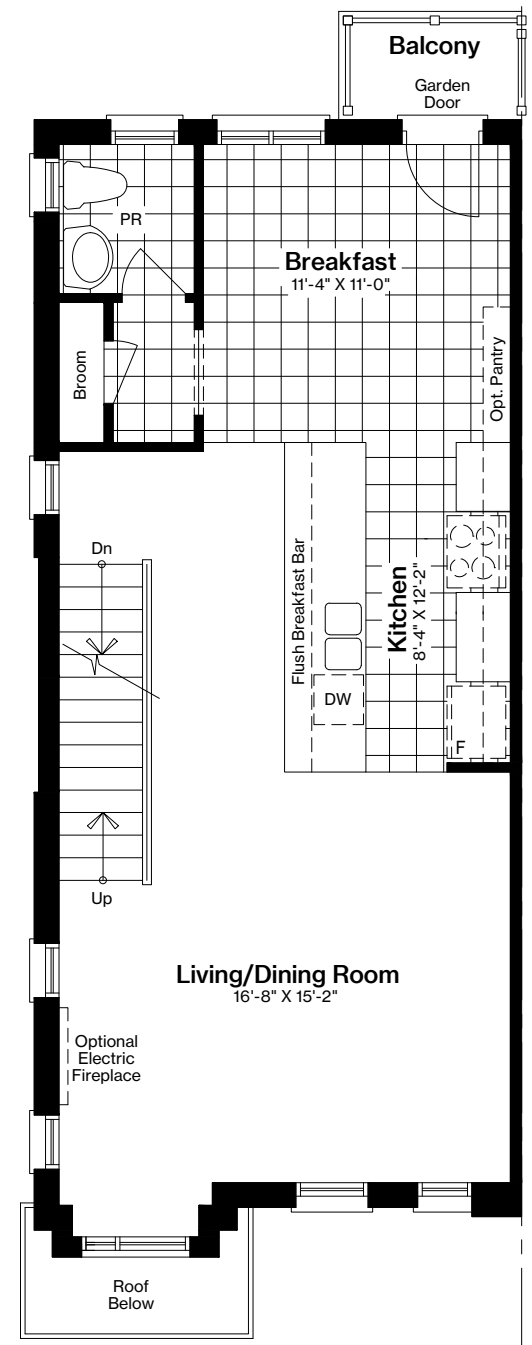
ELEVATION A-4= 1,965 sq.ft. | B-2= 1,973 sq.ft.



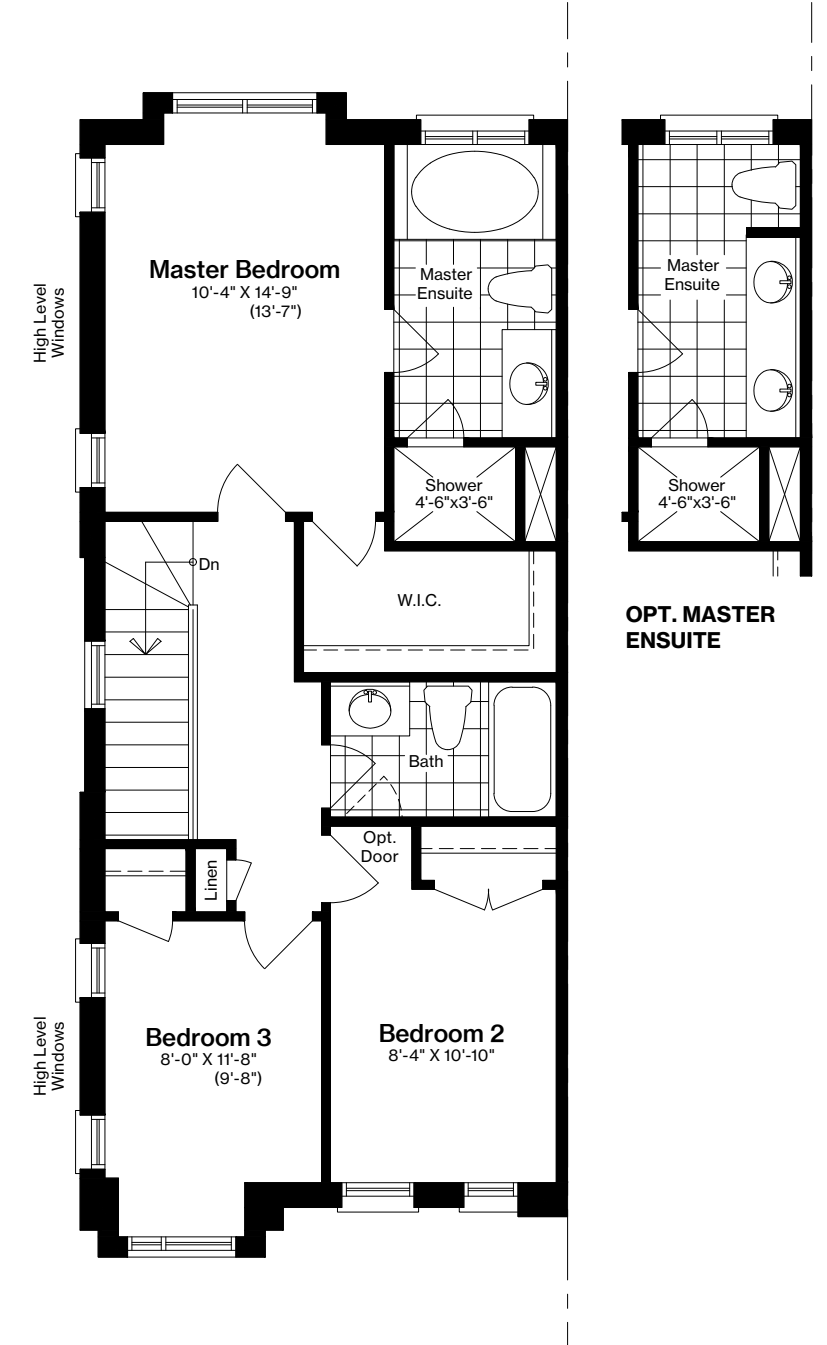
**CORNER
BASEMENT PLAN**



**CORNER
FIRST FLOOR PLAN**

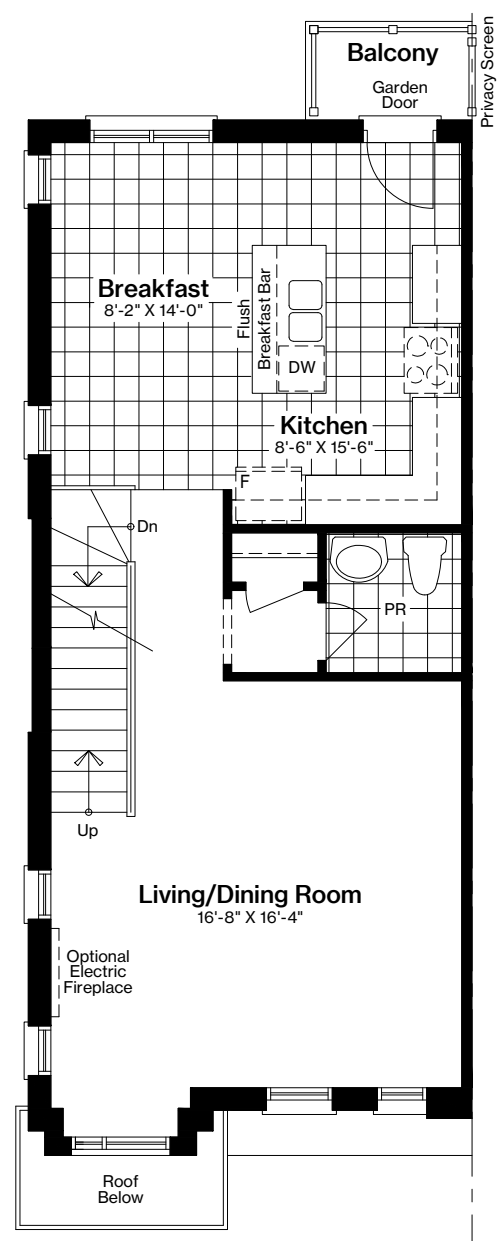


**CORNER
SECOND FLOOR PLAN**



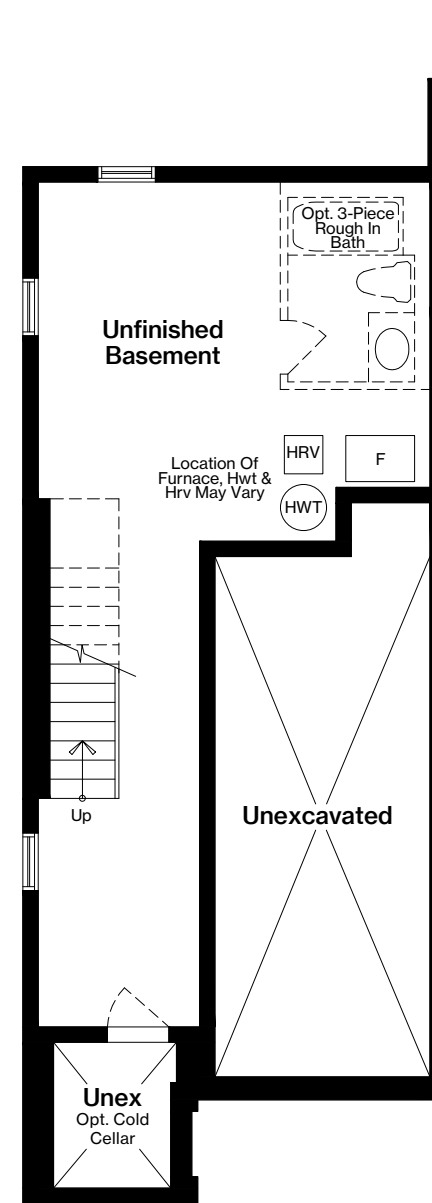
**CORNER
THIRD FLOOR PLAN**

ALTERNATE LAYOUT OPTIONS



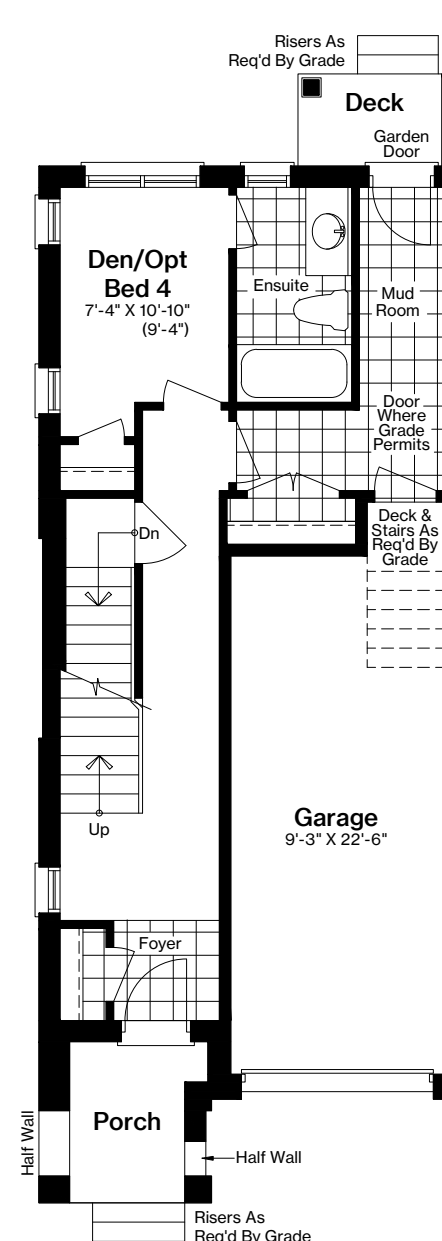
**OPTION 2:
ALTERNATE KITCHEN LAYOUT**

**CORNER
SECOND FLOOR PLAN**

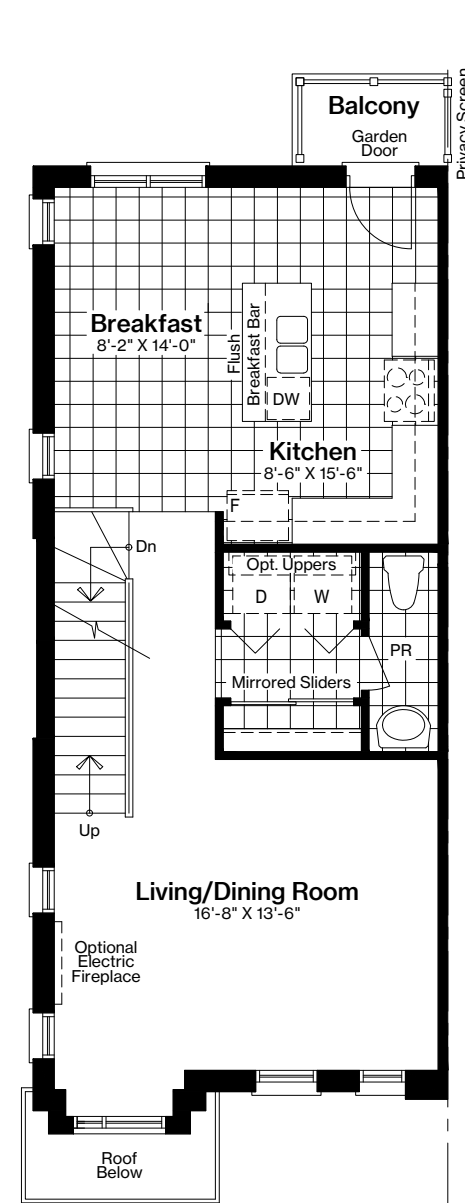


**OPTION 3:
OPTIONAL SECOND FLOOR LAUNDRY LAYOUT WITH 4TH BEDROOM/DEN ON FIRST FLOOR**

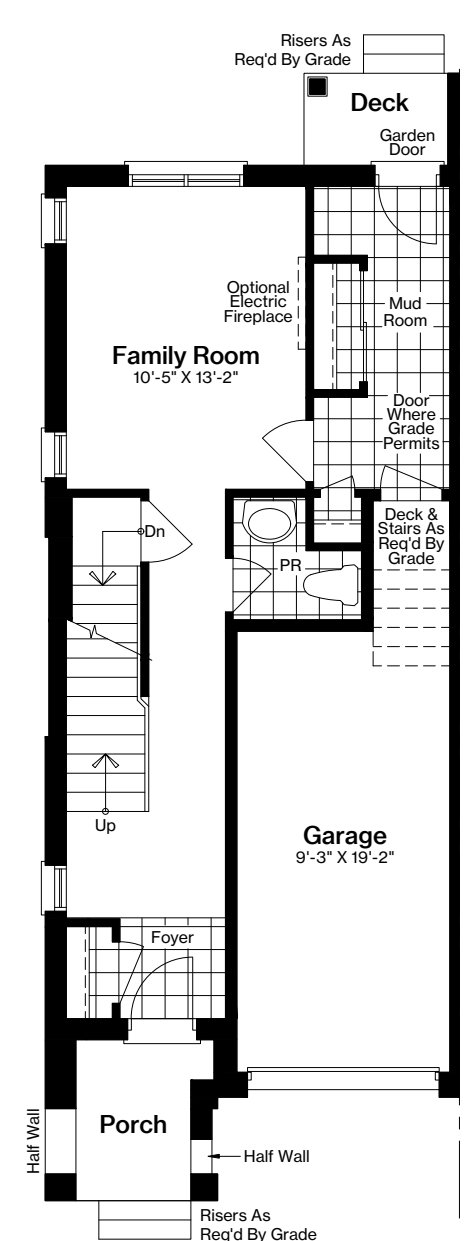
**CORNER
BASEMENT PLAN**



**CORNER
FIRST FLOOR PLAN**



**CORNER
SECOND FLOOR PLAN**



**OPTION 4:
OPTIONAL FAMILY ROOM WITH SECOND FLOOR LAUNDRY**

**CORNER
FIRST FLOOR PLAN**