

MEADOW T-4
1,643 SQ.FT.

3 Bedrooms
2 Full Bathrooms
1 Powder Room

**EAST
MORE**
VILLAGE

MORE
SPACIOUS BACKYARDS

MORE
PLACES TO PLAY

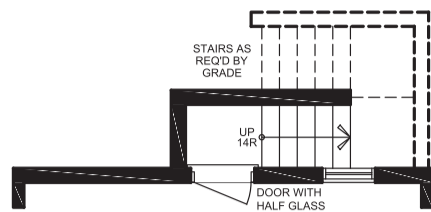
MORE
TO COME HOME TO

EASTMOREVILLAGE.CA

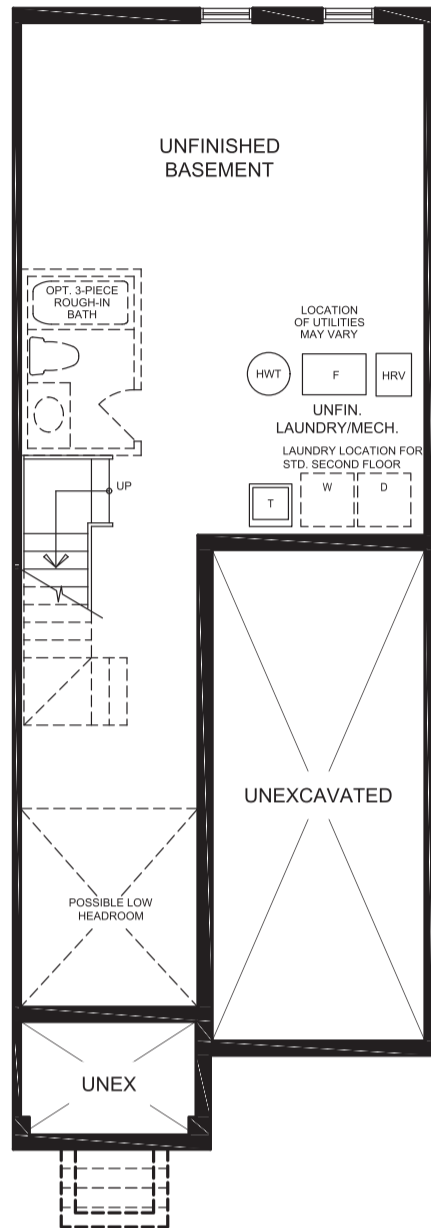
 **DELPARK
HOMES**
Your Future™

MEADOW

ELEVATION A1/A3 - 1,643 sq.ft. / FINISHED BASEMENT - 2,080 sq.ft.
 ELEVATION A2/A4 - 1,633 sq.ft. / FINISHED BASEMENT - 2,070 sq.ft.



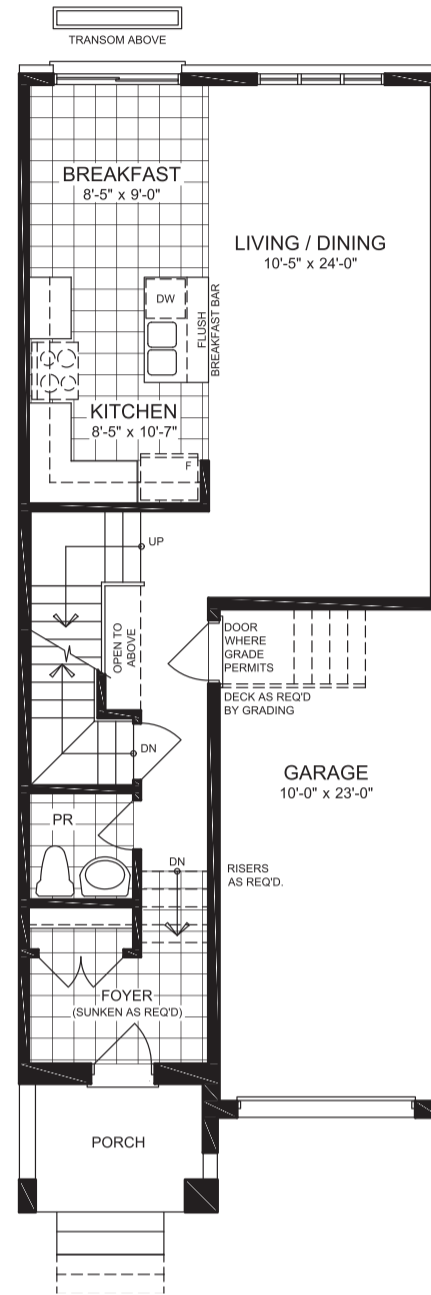
**PARTIAL BASEMENT PLAN
 W/ OPT. WALK-UP**



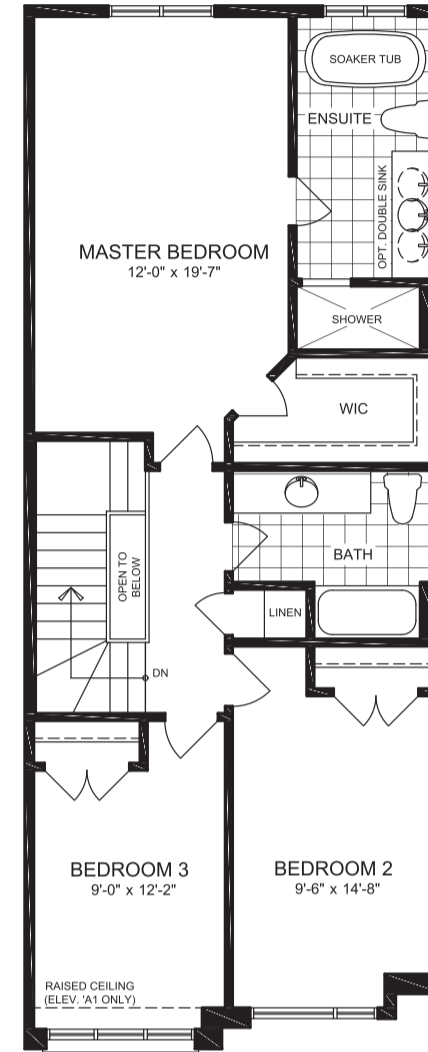
**BASEMENT PLAN
 ELEVATION A**



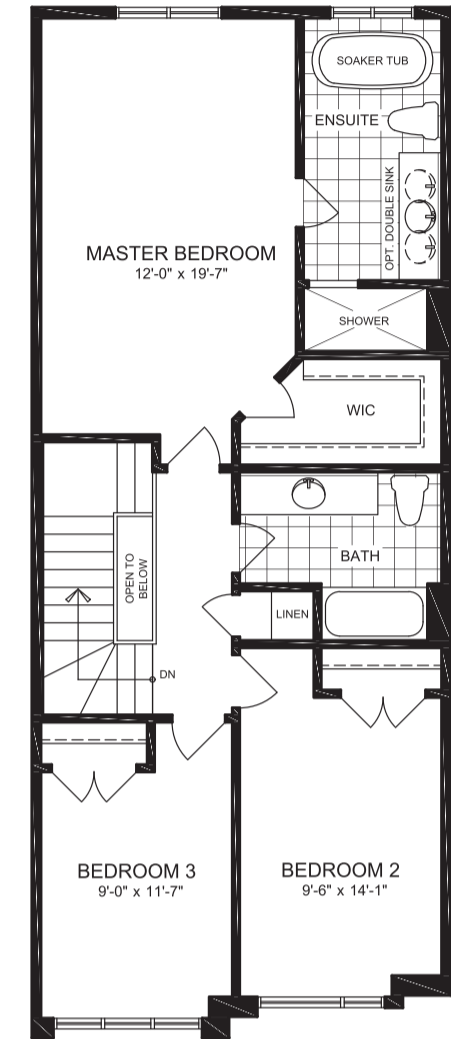
**PARTIAL PLAN
 WITH OPTIONAL
 GAS FIREPLACE**



**GROUND FLOOR PLAN
 ELEVATION A**

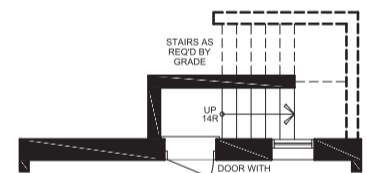


**SECOND FLOOR PLAN
 ELEVATION A1 & A3**

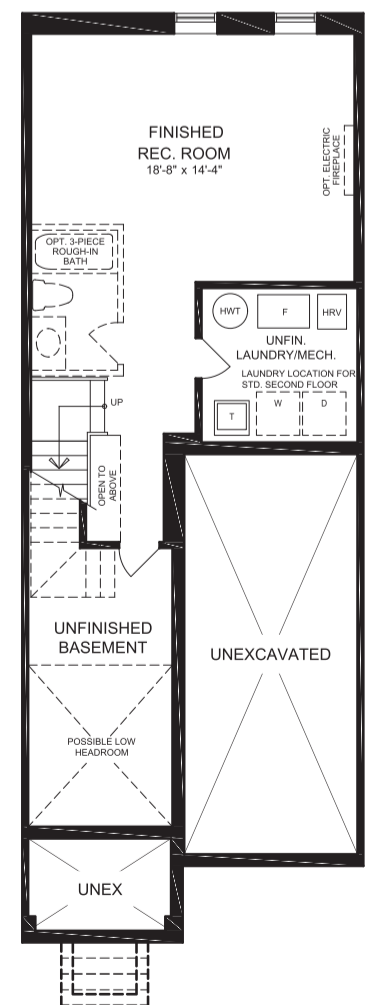


**SECOND FLOOR PLAN
 ELEVATION A2 & A4**

ALTERNATE LAYOUT OPTIONS



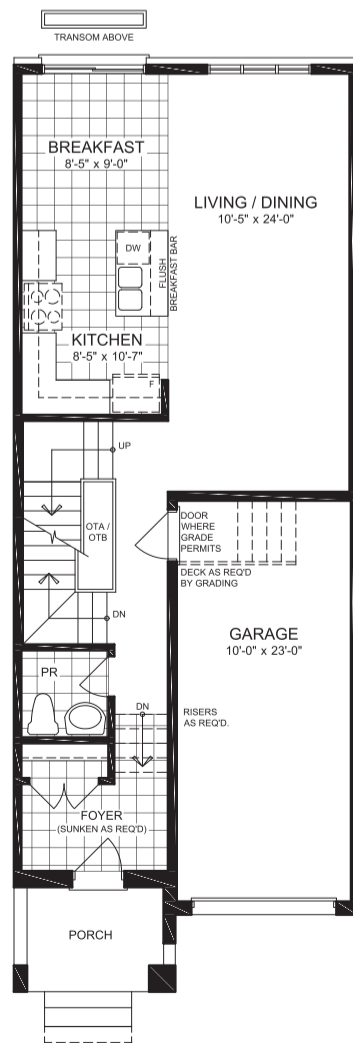
**PARTIAL BASEMENT PLAN
 W/ OPT. WALK-UP**



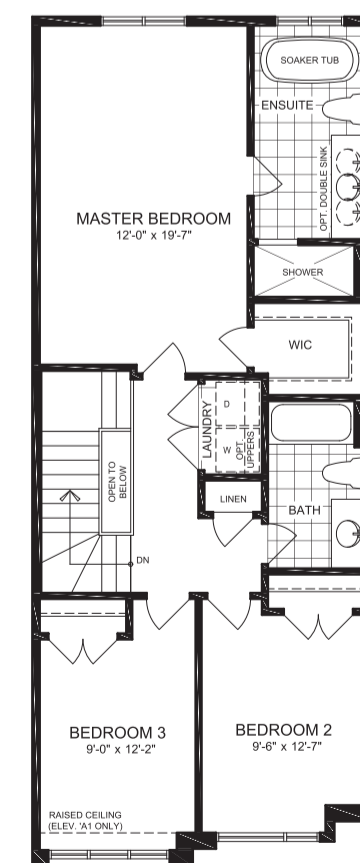
**OPTIONAL FINISHED
 BASEMENT PLAN
 ELEVATION A**



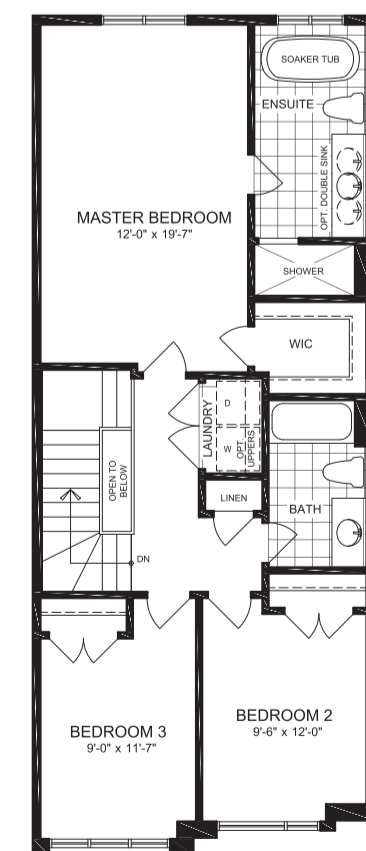
**PARTIAL PLAN
 WITH OPTIONAL
 GAS FIREPLACE**



**GROUND FLOOR PLAN
 W/ OPT. FIN. BASEMENT
 ELEVATION A**



**OPTIONAL
 SECOND FLOOR PLAN
 ELEVATION A1 & A3**



**OPTIONAL
 SECOND FLOOR PLAN
 ELEVATION A2 & A4**