

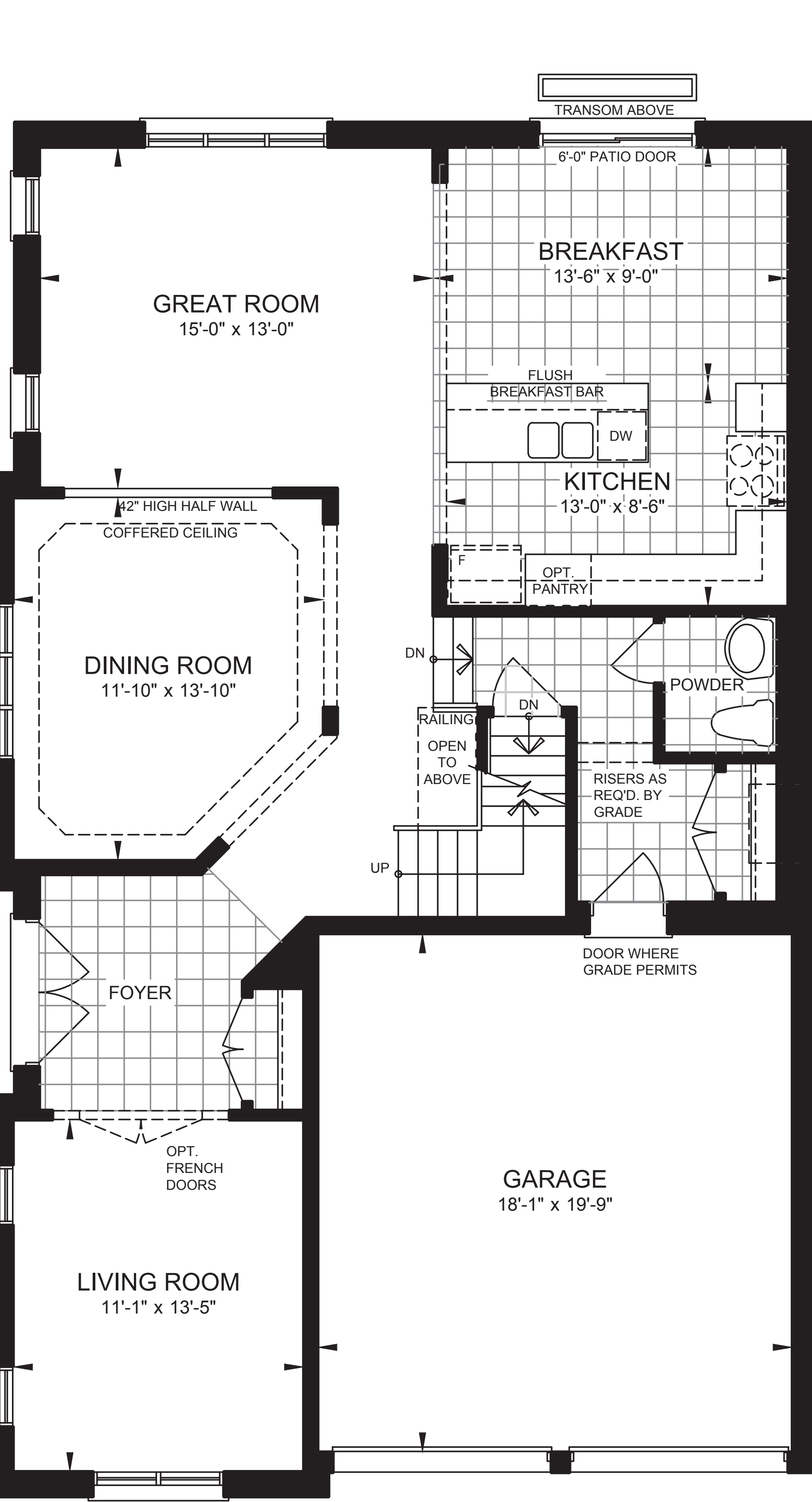
# NORTHRIDGE 40-7

ELEVATION A - 2,687 sq.ft.

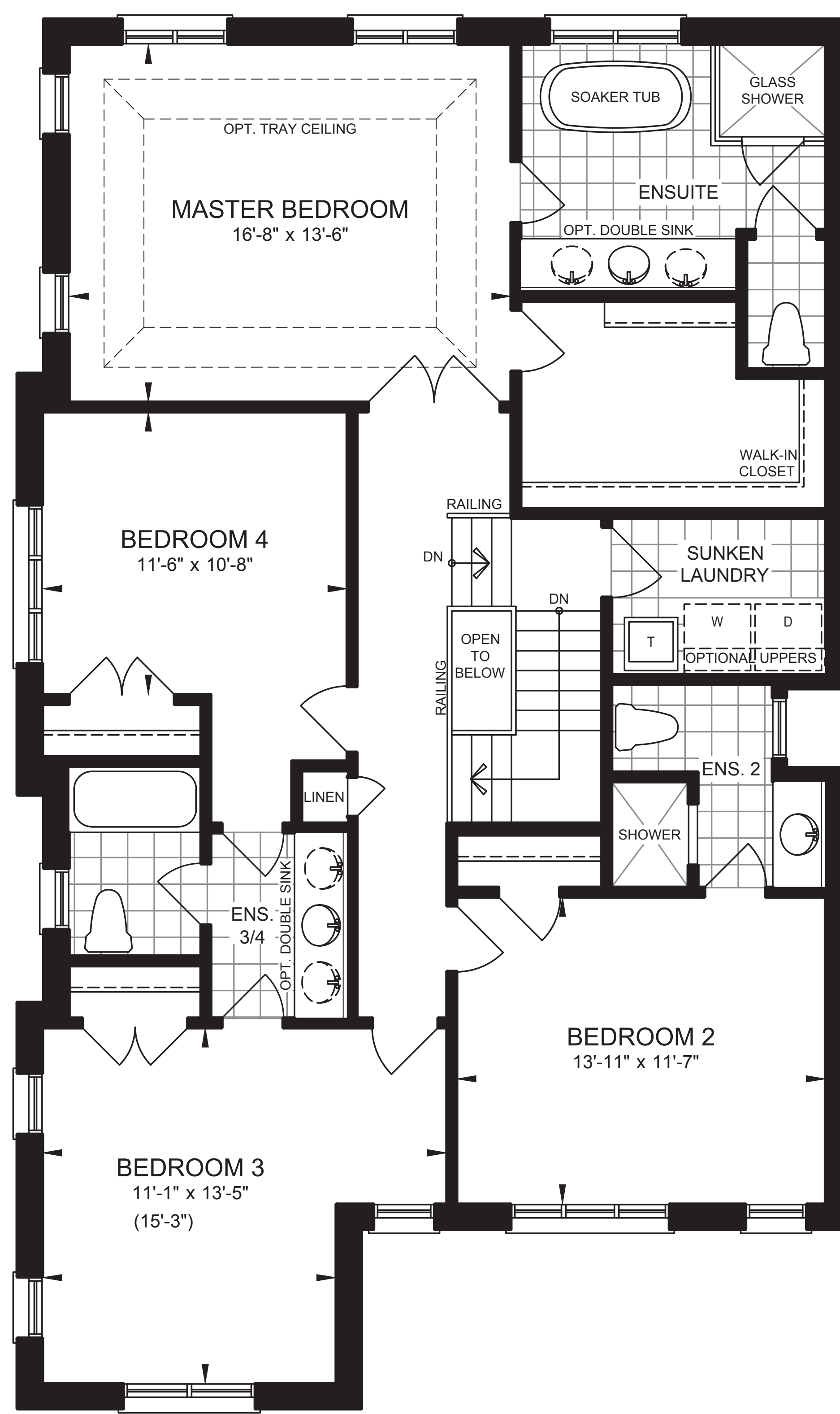
ELEVATION B - 2,688 sq.ft.



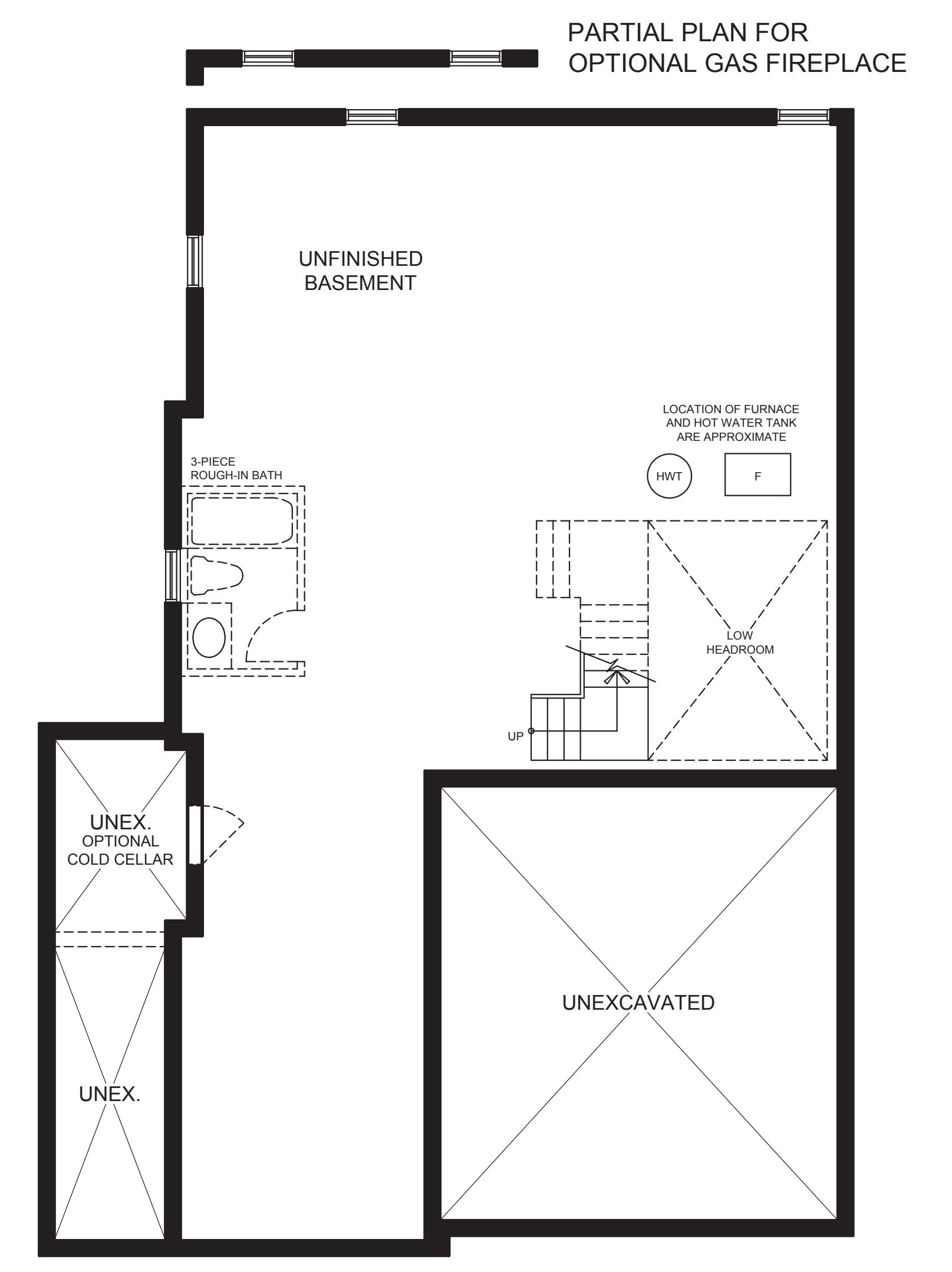
PARTIAL PLAN FOR  
OPTIONAL GAS FIREPLACE



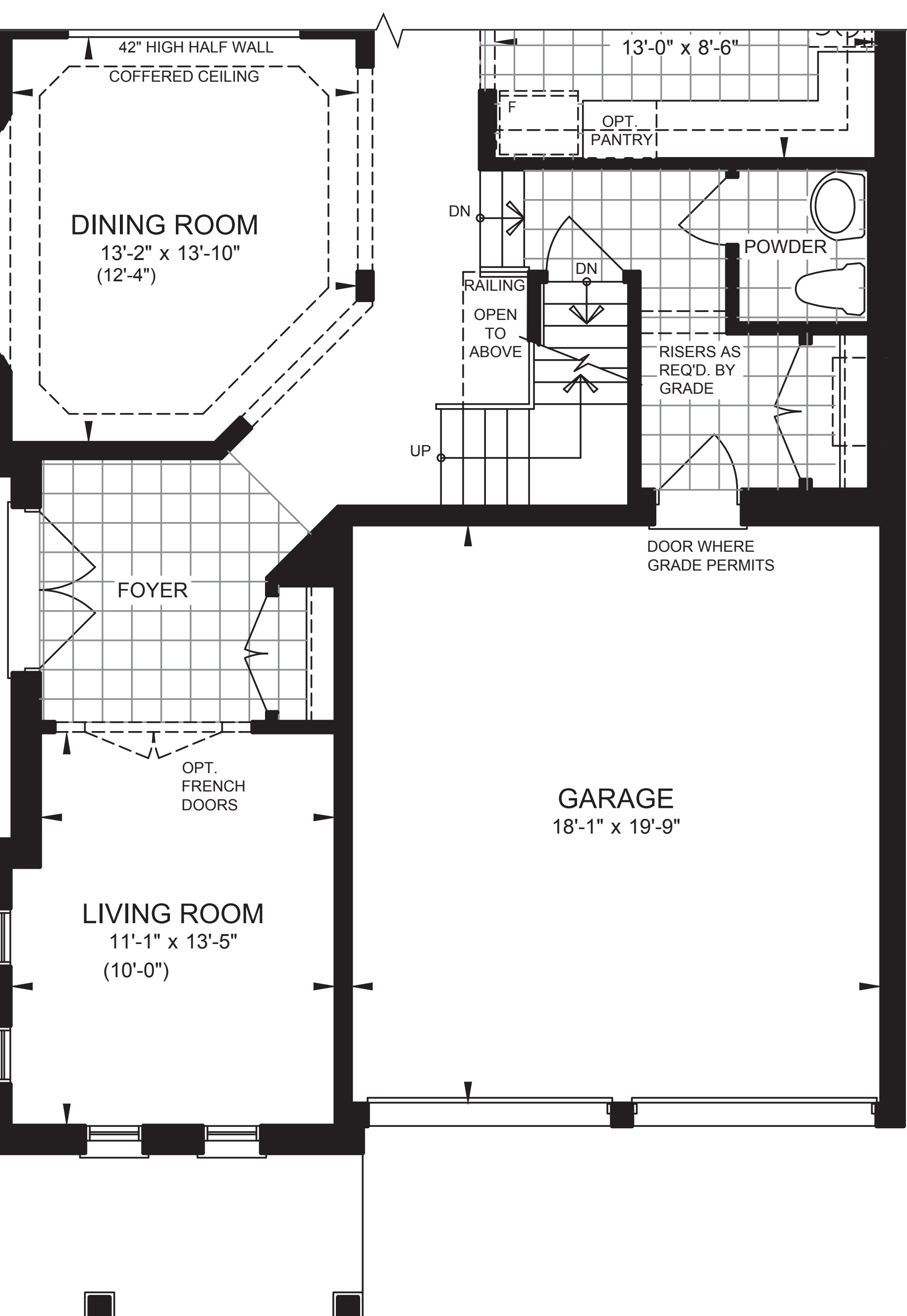
GROUND FLOOR PLAN  
ELEVATION A



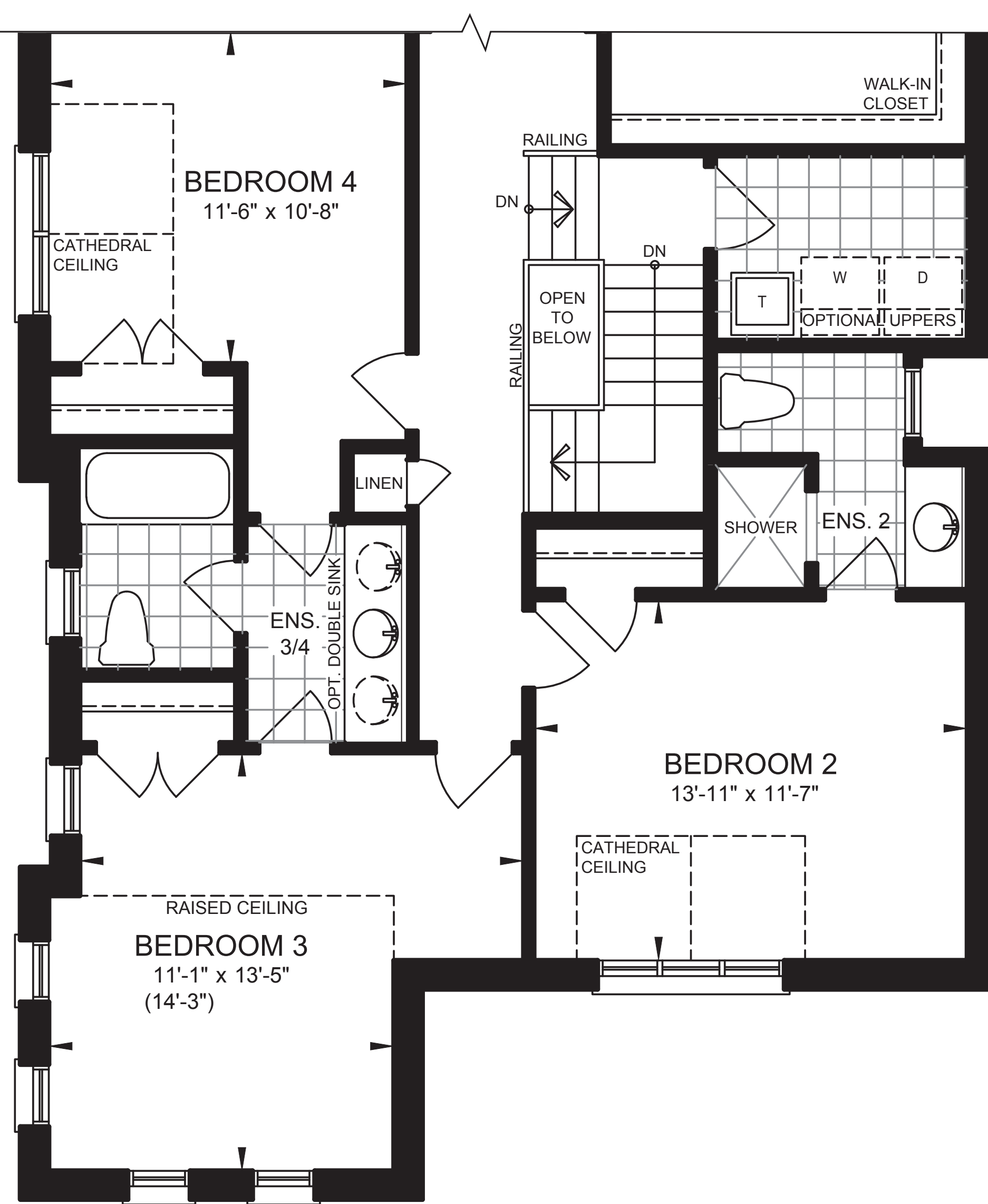
SECOND FLOOR PLAN  
ELEVATION A



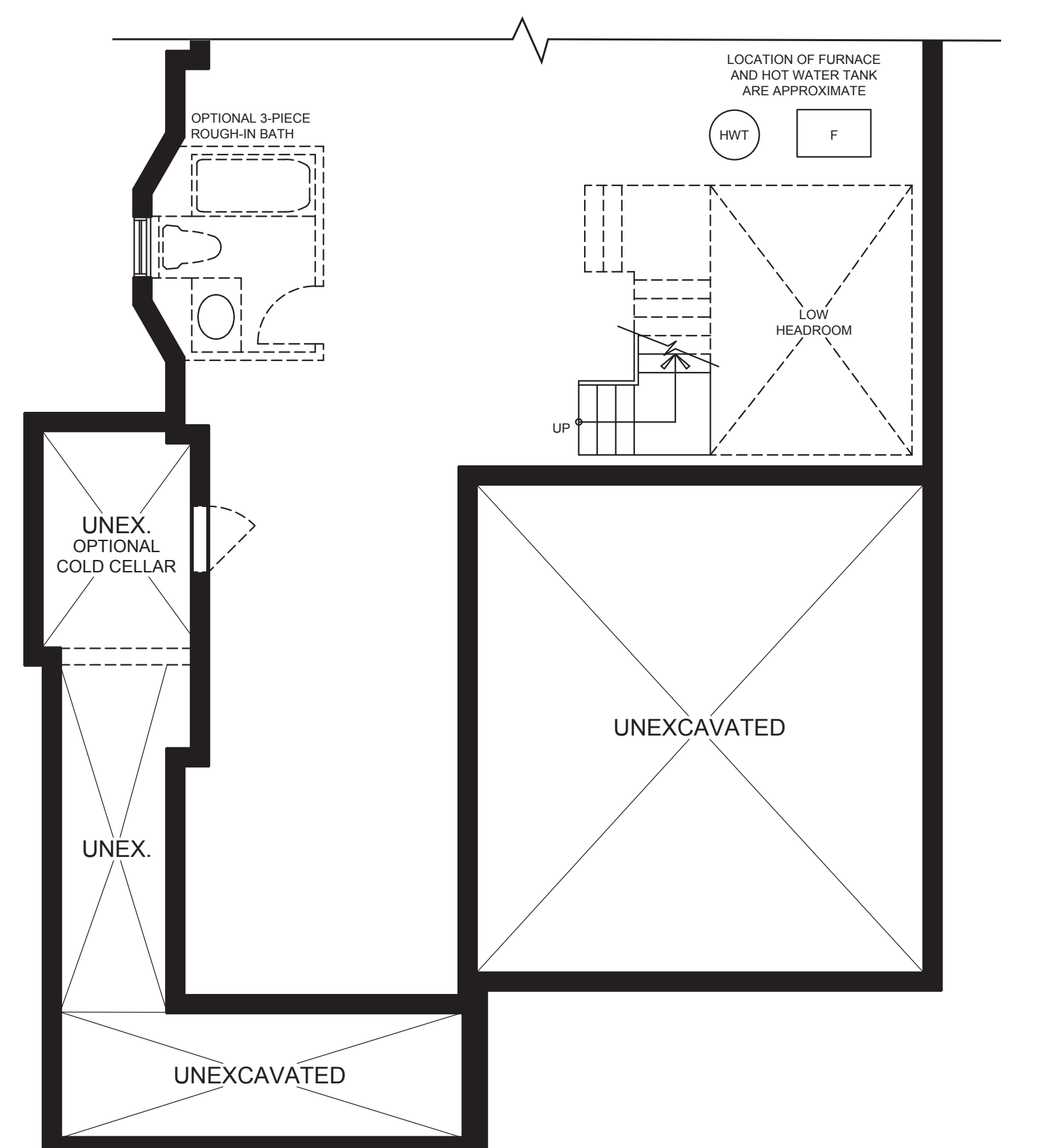
BASEMENT PLAN  
ELEVATION A



PARTIAL GROUND FLOOR PLAN  
ELEVATION B



PARTIAL SECOND FLOOR PLAN  
ELEVATION B



PARTIAL BASEMENT PLAN  
ELEVATION B



**ELEVATION B**